

AUTOMASTER 412 Pro Series

Wheel Balancer



FEATURES

- Top Quality balancer designed for the mid –high volume shop
- Developed by an Italian / Chinese joint venture manufacturer
- Auto data entry offset and diameter
- Self calibration feature
- Ounce/ gram selectable
- mm/inch selectable
- Normal, Static, ALu1, ALu2, ALu3, ALu4 and ALu* balance modes
- Split hidden stick on weight application
- Back or front mounting
- 40mm shaft size
- Includes space saving Safety hood
- Foot pedal holding brake

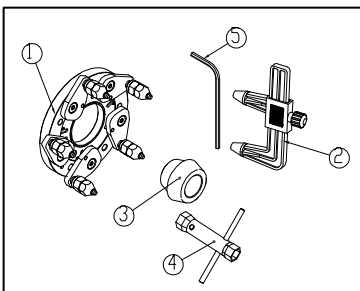
SPECIFICATIONS

Max. wheel weight	65kg
Wheel diameter	39" (1000mm)
Rim diameter	10" - 26" (255 - 660mm)
Wheel width	1.5" - 20" (39 - 510mm)
Balancing precision	±1g
Cycle time	7 s
Balancing speed	150 rpm
Power supply	220V
Motor power	180w
Noise level	< 70 dbA
Gross Weight	150kg
Warranty	2 Year

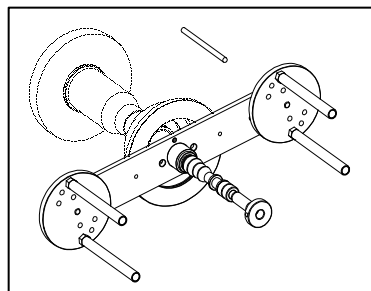
STANDARD ACCESSORIES



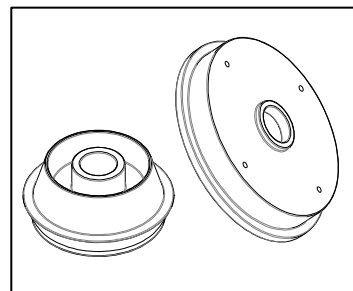
OPTIONAL ACCESSORIES



PF-211



PF-14101



PF-221201