

AUTOMASTER 401

Wheel Balancer



FEATURES

- Suited to med volume user looking for a low cost option
- Manual entry of wheel dimensions
- Dynamic , static and multiple alloy wheel modes
- Self Calibration feature
- 40mm threaded shaft
- Foot Pedal holding brake
- Compact design
- Auto start when hood closed
- Back or front mounting
- Automatic braking after balance spin
- Rapid Optimization (OPT)
- Optional oversized cone & Spacer
- Optional Motorcycle kit

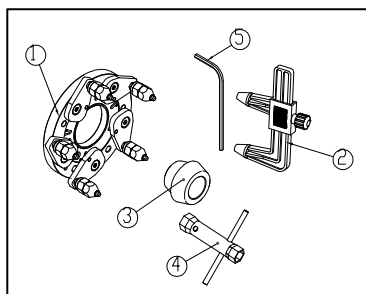
STANDARD ACCESSORIES



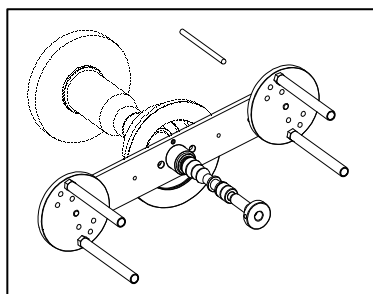
SPECIFICATIONS

Max. wheel weight	65kg
Wheel diameter	39" (1000mm)
Rim diameter	10" - 26" (255 - 660mm)
Wheel width	1.5" - 20" (39 - 510mm)
Balancing precision	±1g
Cycle time	7 s
Balancing speed	150 rpm
Power supply	220V
Motor power	180w
Noise level	< 70 dbA
Gross Weight	150KG
Warranty	1 year

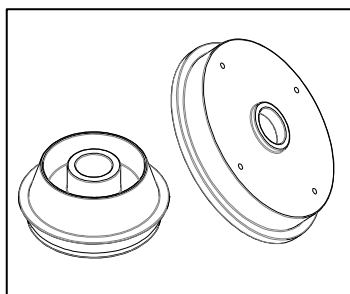
OPTIONAL ACCESSORIES



PF-211



PF-14101



PF-221201